

Specification MAP/CV63/Issue 8 Dated 11.3.47. To be read in conjunction with K1001	<u>SECURITY</u>	
	<u>Specification</u> RESTRICTED	<u>Valve</u> RESTRICTED

—————> Indicates a change

<u>TYPE OF VALVE</u> - Triode		<u>MARKING</u> See K1001/4.	
<u>CATHODE</u> - Indirectly heated		<u>BASE</u> I.O.	
<u>ENVELOPE</u> - Glass - unmetallised			
<u>PROTOTYPE</u> - E1323			
<u>RATING</u>		Pin	Electrode
Heater Voltage (V)	6.3	1	No connection
Heater Current (A)	0.8	2	Heater
Max. Anode Voltage (kV)	2.5	3	Pin omitted
Max. Anode Dissipation (W)	2.5	4	No connection
Max. Anode Current (approx. mean peak) (mA)	500	5	No connection
Mutual Conductance (mA/V)	6.7	6	Pin omitted
Efficiency at 225 Mc/s operating frequency	35%	7	Heater
" " 260 Mc/s "	32%	8	Cathode
" " 290 Mc/s "	17%	TC1	Grid
" " 300 Mc/s "	12%	TC2	Anode
Max. Frequency at which valve will oscillate (Mc/s)	250	Blank pins may be used in positions 3 and 6 if a manufacturer desires.	
<u>CAPACITANCES (pF)</u>		<u>TOP CAPS</u> See K1001/AI/D5.2	
C _{ag}	3.65	<u>DIMENSIONS</u> See drawing on page 3.	
C _{ge}	4.9		
C _{ae}	1.35		

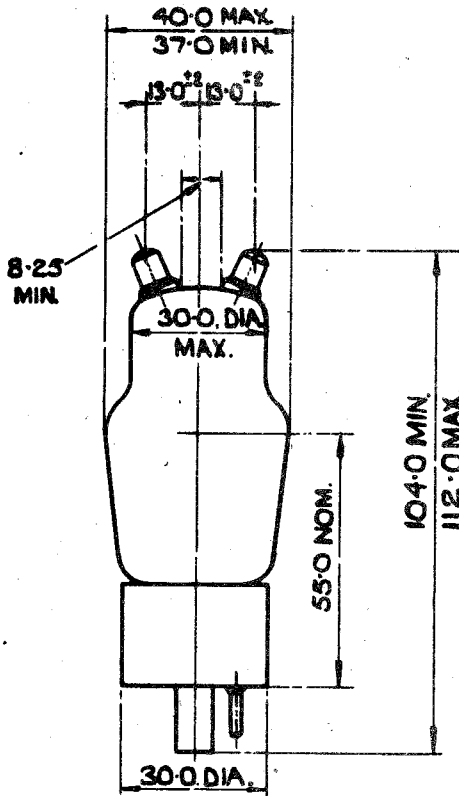
NOTES

A:- At $V_h = 6.3$, $V_a = 100$, $V_{g1} = -3.0$.

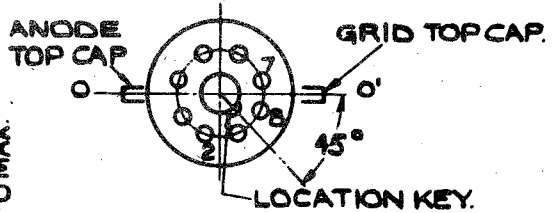
B:- The valve has been designed for use under pulse conditions with anode modulation and $V_h = 6.3 \pm 4\%$, when the above ratings apply. When used under conditions of grid modulation the maximum anode voltage should not exceed 500V.D.C.

To be performed in addition to those applicable in K1001

	Test Conditions			Test	Limits		No. Tested			
					Min.	Max.				
a	See K1001/AIII			<u>CAPACITANCES (pF)</u>			6 per week			
	Links to H.P.	Links to L.P.	Links to E.							
	TC2	TC1	1,2,4, 5,7,8, 9,10.					Cag	3.3	4.0
	TC2	1,2,4,5, 7,8,9,10	TC1					Cae	1.1	1.6
	TC1	1,2,4,5, 7,8,9,10	TC2	Cge	4.3	5.5				
b	Vh	Va	Vg	Ih (A)	0.72	0.88	100% or S			
	6.3	0	0							
c	6.3	100	-3	Ia (mA)	17.5	32.5	100%			
d	6.3	100 Peak grid swing ±0.5V. max.	-3	gn (mA/V)	5.0	8.4	100%			
e	6.3	100	-3	Reverse Ig (μA)	-	2.0	100%			
f	Valve to be tested in circuit shown on page 3 (or similar circuit to be approved by D.C.D.)			Peak Ia (A)	1.5	-	100%			



CENTRES OF TOP CAPS MUST NOT DEVIATE FROM LINE O-O' MORE THAN 2 MM.



VIEW OF UNDERSIDE OF BASE

ALL DIMENSIONS IN MILLIMETRES

